

WALSH & FORD

Established 1949

Bulk Handling Specialists

Phone: (07) 4662 6174
(07) 4662 6110

Servicing Australia for over 50 years

PO Box 272
4 Dan Street, Dalby, Qld., 4405
Australia

Fax: (07) 4662 2435

BULK HANDLING SPECIALISTS GRAIN HAUL OUT BINS



Multipurpose Chassis
Series 6 PTO
Clean Out Slide
12 Gauge Sheet Body
1/4" Flight
Double Hydraulic Shutoff
Internal / External Ladders
Solid Steel Hubs
Triple Layer Chassis RHS
8" x 4" x 1/4
Wall Angle 45°



30 Tonne - 19" Auger

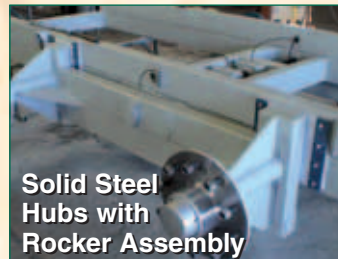
Swivel Eye Pull
Fully Guarded at Drive
Slip Clutch Standard
Auger Hopper Spout
Internal Lift Lugs
External Tie Down Points
Provision for Light
19" Auger Standard
Fully Welded Internally



Bin on Stands



Chassis Sub Frame



Solid Steel Hubs with Rocker Assembly



25 Tonne Haul Out Bin

SIZE	AXLE	TYRE	HORIZ. AUGER	DISCH AUGER	GEAR BOX	WIDTH	HEIGHT TO FILL	HEIGHT UNDER AUGER	PRICE \$ EX. FACTORY
10T	Single	24.5 x 32	12"	19	1 : 1	11'4"	11'5"	13'11"	
12T	Single	30.5 x 32	12"	19	1 : 1	11'4"	11'5"	13'11"	
16T	Single	30.5 x 32	12"	19	1 : 1	11'4"	11'5"	13'11"	
18T	Single	30.5 x 32	12"	19	1 : 1	11'4"	11'5"	13'11"	
22T	Bogie	24.5 x 32	12"	19	1 : 1	11'4"	11'5"	13'11"	
25T	Bogie	30.5 x 32	12"	19	1 : 1	11'4"	11'5"	13'11"	
30T	Bogie	30.5 x 32	12"	19	1 : 1	11'4"	11'5"	13'11"	

ROLL OVER TARP \$

SERVING AUSTRALIA'S BULK HANDLING REQUIREMENTS SINCE 1949

"SIMPLY THE BEST" WWW.WALSHANDFORD.COM.AU

SPECIFICATIONS SUBJECT TO CHANGE

WALSH & FORD

Established 1949

Bulk Handling Specialists

Phone: (07) 4662 6174
(07) 4662 6110

Servicing Australia for over 50 years

PO Box 272
4 Dan Street, Dalby, Qld., 4405
Australia

Fax: (07) 4662 2435

BULK HANDLING SPECIALISTS MANURE SPREADERS



Multipurpose Chassis

Series 6 PTO

Oil Cooler

12 Gauge Sheet Body

Vogel Lubrication

Chain Slat Floor

Solid Steel Hubs

Triple Layer Chassis RHS

8" x 4" x 1/4

Wall Angle 45°



30 Tonne - Manure Spreader

Swivel Eye Pull

Fully Guarded

Hydraulic Variable Spinners

Hydraulic Variable
Floor Speed

Adjustable Spinner Slats

Internal Lift Lugs

Acid Resistant Interior Paint

Fully Welded Internally

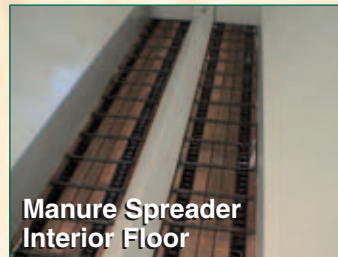
Auto Lubrication System



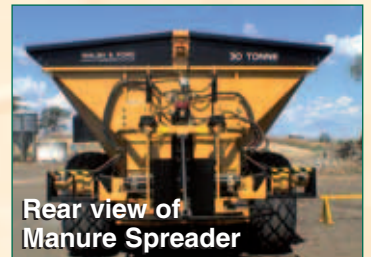
Manure Spread on Stands



Manure Spreader in Action



Manure Spreader
Interior Floor



Rear view of
Manure Spreader

SIZE	AXLE	TYRE	WIDTH	HEIGHT TO FILL	PRICE \$ EX. FACTORY
10T	Single	24.5 x 32	11'4"	11'5"	
12T	Single	30.5 x 32	11'4"	11'5"	
16T	Single	30.5 x 32	11'4"	11'5"	
18T	Single	30.5 x 32	11'4"	11'5"	
22T	Bogie	24.5 x 32	11'4"	11'5"	
25T	Bogie	30.5 x 32	11'4"	11'5"	
30T	Bogie	30.5 x 32	11'4"	11'5"	

"The mandate for Walsh and Ford was to manufacture an interchangeable manure spreader and grain 'chaser' bin in excess of 30 tonnes that was robust enough to handle our undulating country and have high capacity delivery: the results were above expectations."

Michael Owen
Owen Enterprises Pty Ltd
"Wydidya" North Star NSW 2408

SERVING AUSTRALIA'S BULK HANDLING REQUIREMENTS SINCE 1949

"SIMPLY THE BEST" WWW.WALSHANDFORD.COM.AU

SPECIFICATIONS SUBJECT TO CHANGE